



## Installation Guidelines for:- Timber Mount Anchor Point



Std Timber Mount with small dektite  
(Code 766362) (For metal Deck Roofs)

Timber Mount Anchor with tiletite (Code 766363)  
(For tiled roofs)

### Disclaimer

### Installation of Safety Products

- The Manufacturer/Distributor cannot be held responsible for any product that is not installed correctly. Persons installing these Products must be approved installers. All persons installing Height Safety Products must know the 'Working At Heights' Regulations, have had Height Safety Training & be competent in all the relevant Australian Standards applicable to the work you are doing. Any installation diagrams are the manufacturers recommended methods and must be adhered to. The manufacturer/Distributor cannot be held responsible for incorrect installation documentation or procedures. The Distributor will endeavor to help and give guidance where necessary but cannot be held responsible for any 'mis-interpretations' or 'incorrect' advice. The Manufacturer/Distributor cannot warrant the structure to which the product is connected to. Assessment must be made by a qualified structural Engineer, unless it is clear to a competent person that it is structurally adequate. E&OE applies to all documentation.
- If you are uncertain and need help CALL:-

Tel: (AUS) 1300 728 672 (NZ) 0800 441 335



# TRUSS MOUNT ANCHOR POINT

(With Std Dektite – Code 766362, With Tiletite – Code 766363)

## INSTALLATION GUIDELINES

### **Minimum timber sizes:**

If main timber truss is less than 90 x 45 mm F7 Grade, the truss must be strengthened – see attached details (laminated installation details).

### **Inspect timber for strength.**

Do not attach bracket to timber with splits, cracks, knots or any other defective type timber. (If any doubt exists as to the strength of the timber, an engineer should make the assessment.)

### **Step 1**

Locate aluminium bracket on the side of the truss and mark the 4 holes.

### **Step 2**

Drill 4 x 8 mm holes.

### **Step 3**

Attach bracket to the truss using 4 x M8 bolts.

### **Step 4**

Mark the hole to be drilled on the tile/roof deck and drill a hole approximately 20 mm for the eyebolt to fit through.

### **Step 5**

Insert eyebolt through the Dektite / Tiletite and attach eyebolt to bracket and lock off eyebolt facing fall direction.

### **Step 6**

Seal Dektite / Tiletite. Anchor point is now ready for use.

**IMPORTANT: THIS TYPE OF ANCHOR IS NOT TO BE USED FOR ABSEIL.**

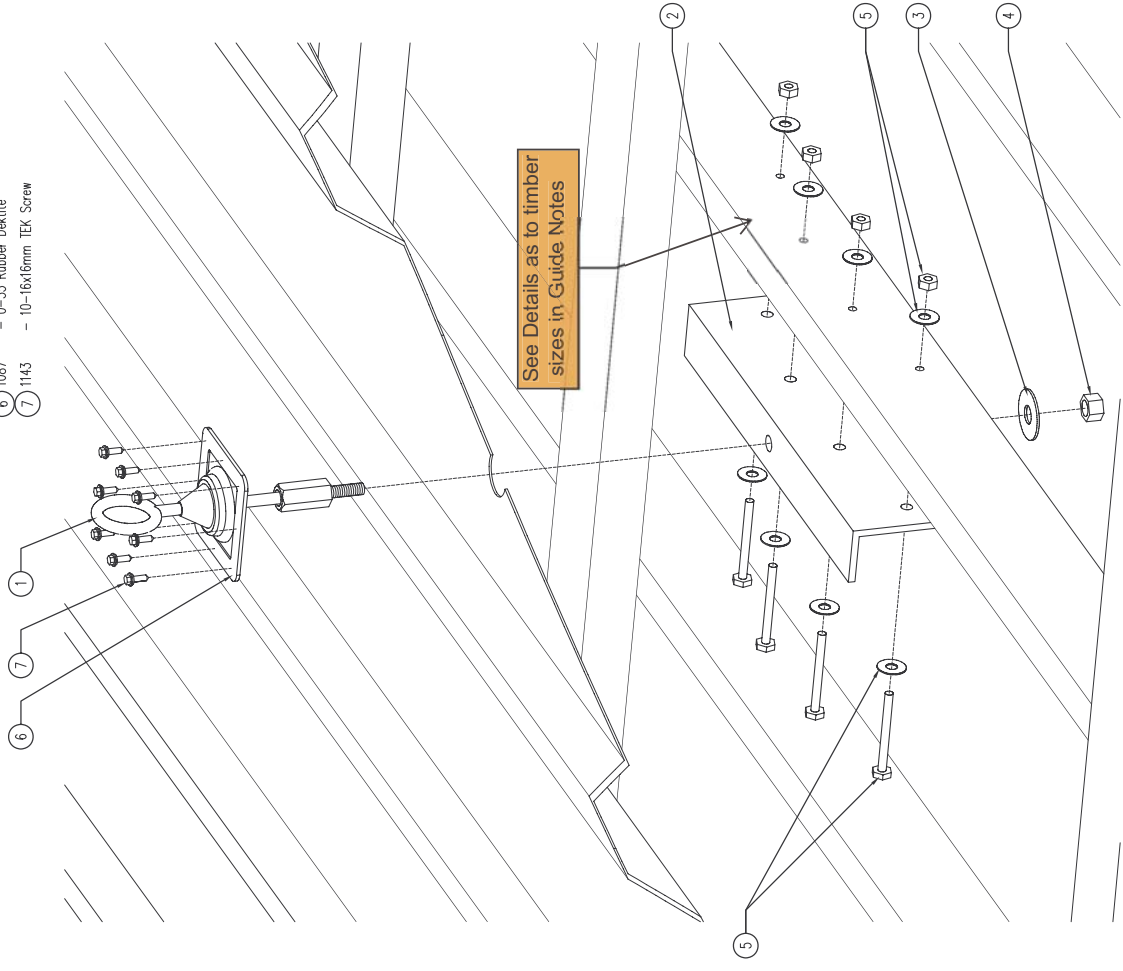
**IF YOU ARE UNSURE PLEASE CALL: (AUS) 1300 728 335 (NZ) 0800 441 335**



The Safety Company

COMPONENTS:

- 1 1077 – Eyebolt and Lock Nut
- 2 1001 – Timber Truss Mount Plate
- 3 1135 – M14 Washer
- 4 1133 – M14 Nut
- 5 1123 – M8x75mm Zinc Hex Bolt Set
- 6 1087 – 0-35 Rubber Dekite
- 7 1143 – 10-16x16mm TEK Screw



PLEASE NOTE: READ INSTALLATION GUIDE BEFORE INSTALLING ANCHORS.

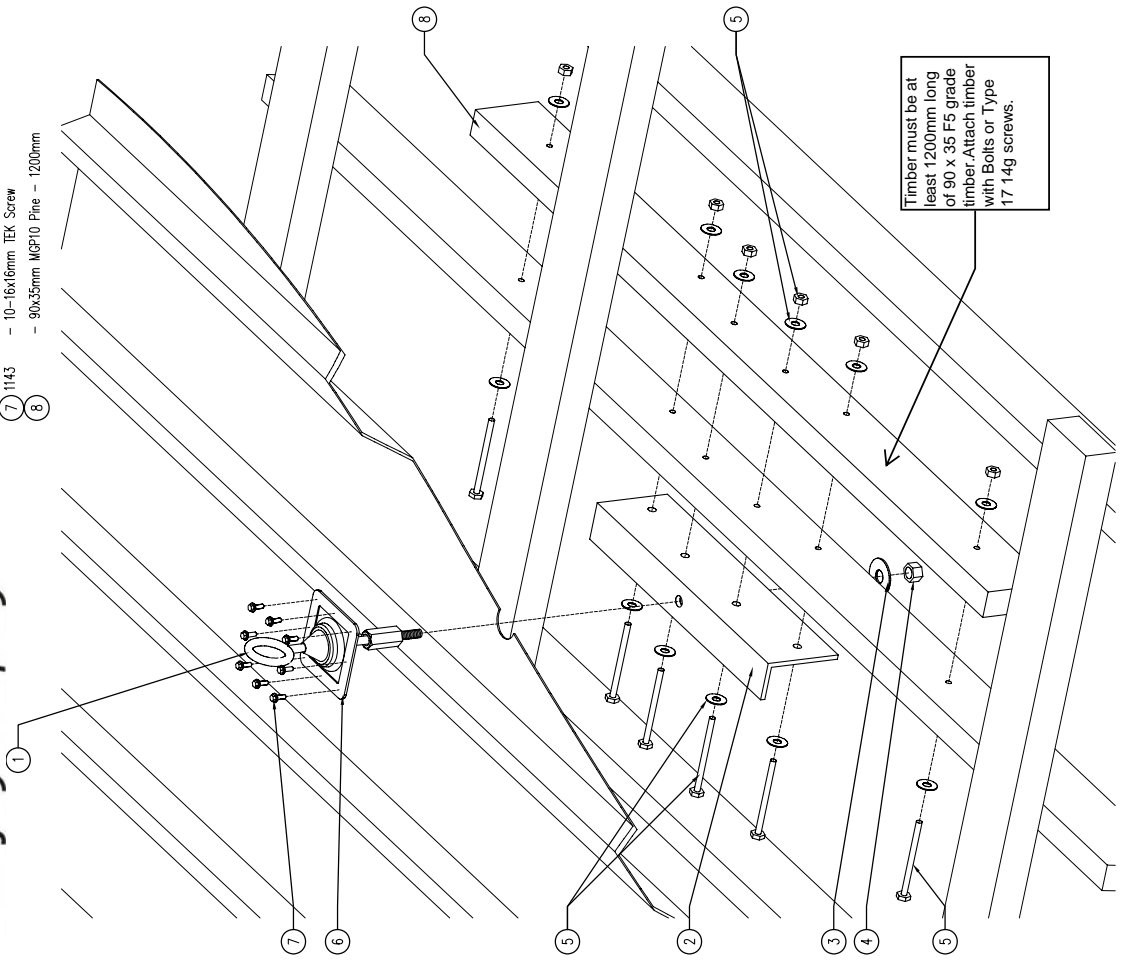
## Timber Truss Mount Anchor - Standard Installation Details



The Safety Company

COMPONENTS:

- 1 1077 – Eyebolt and Lock Nut
- 2 1001 – Timber Truss Mount Plate
- 3 1135 – M14 Washer
- 4 1133 – M14 Nut
- 5 1121 – M8x100mm Zinc Hex Bolt Set
- 6 1087 – 0-35 Rubber Dekite
- 7 1143 – 10-16x16mm TEK Screw
- 8 90x35mm MQP10 Pipe – 1200mm

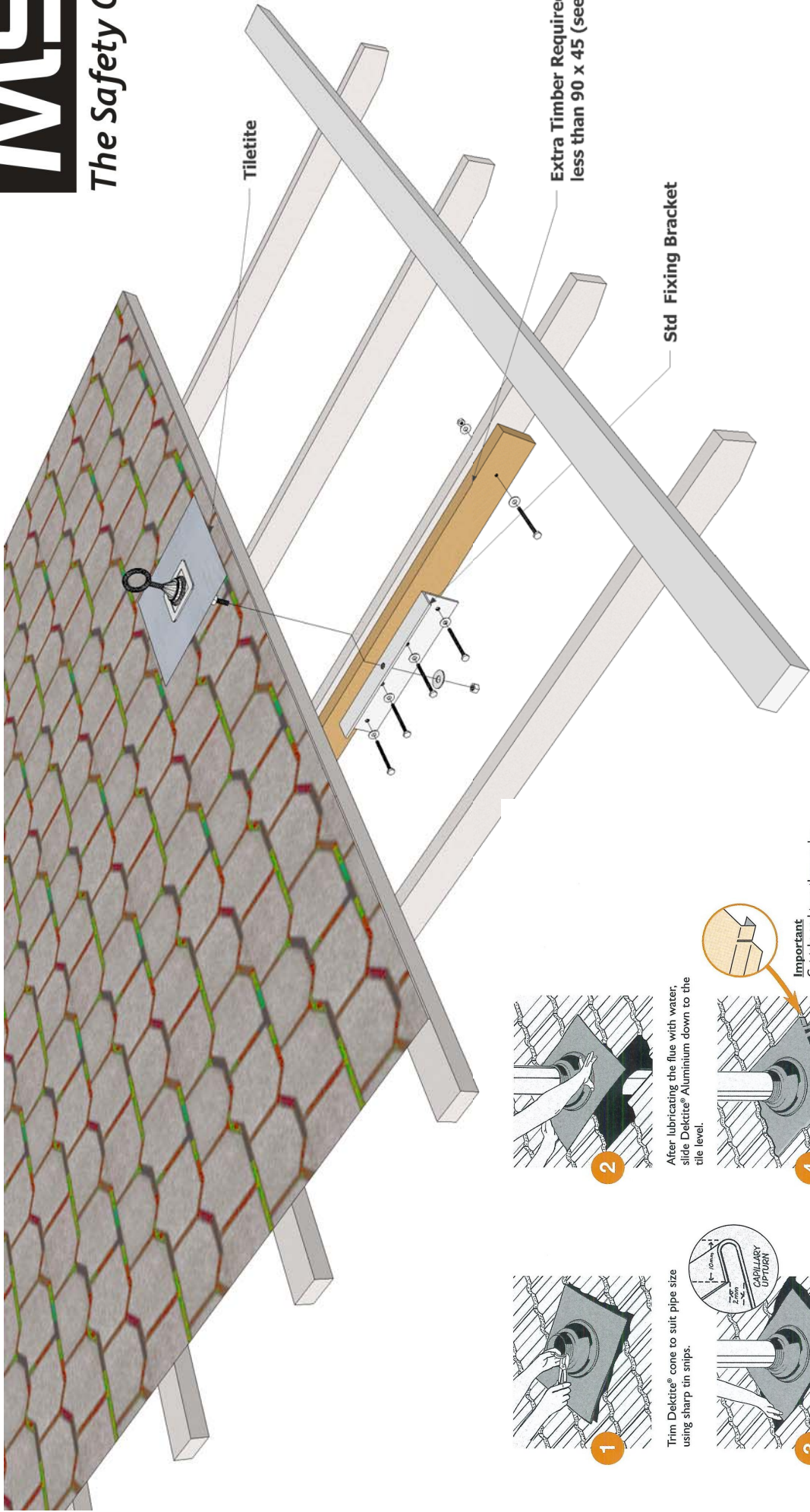


PLEASE NOTE: READ INSTALLATION GUIDE BEFORE INSTALLING ANCHORS.

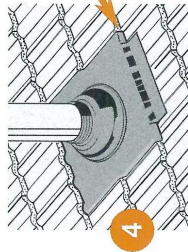
## Timber Truss Mount Anchor - Laminated Installation Details



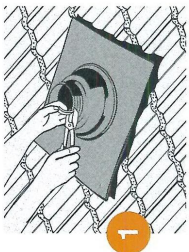
The Safety Company



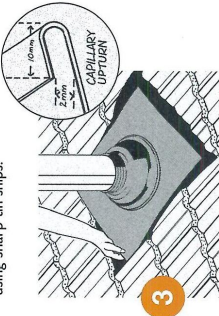
2 After lubricating the flue with water, slide Dekkrite® Aluminium down to the tile level.



4 Cut tabs and then just press and tab the bottom corners to form a soaker run-off tray.



1 Trim Dekkrite® cone to suit pipe size using sharp tin snips.



3 Place upper edge of base under tiles, forming an anti-capillary fold.

## Fixing Details of Timber Mount Anchor Point with Tiletite

Extra Timber Required if Truss Cord is less than 90 x 45 (see instruction manual)